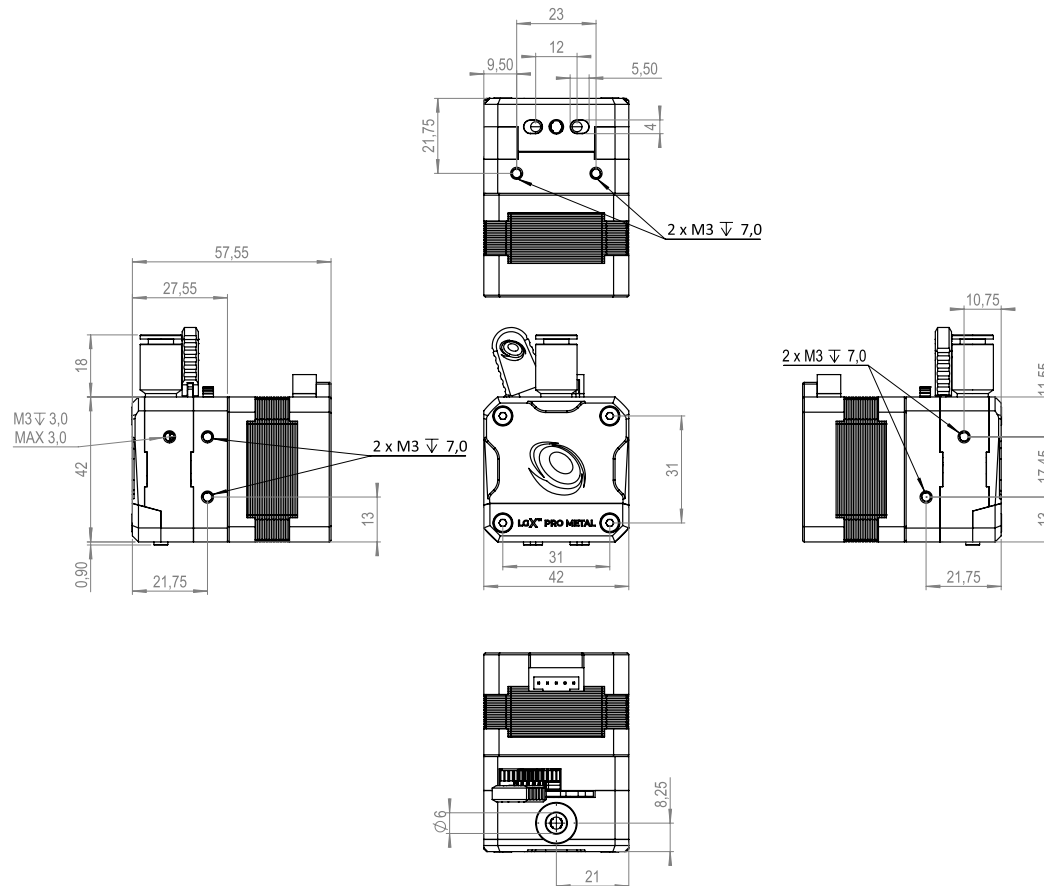


#extruder

EXT01LGX41176
SKU



NAME LGX PRO Metal 2.85 eXtruder

TYPE Extruder

SKU EXT01LGX41176

Specifications

E-Steps	435 @ 1/16 micro stepping. For Klipper Rotation Distance 7.356
Drive Wheels	Hardened Steel
Top Fitting Tube OD	6.0mm
Materials Compatibility	Abrasive, Rigid, Semi-flexible, Flexible and Soft
Mounting	Bottom anterior 2 points. Left 2 points. Right 2 points. Front 4 points. Back 4 points
Max Tightening Torque	0.3Nm (Limit of the threads on Stepper Motor)
Housing	Aluminum
Max Working Temperature	90°C @ 650mA
Weight	310g
Push Force	7-10kg

Comments

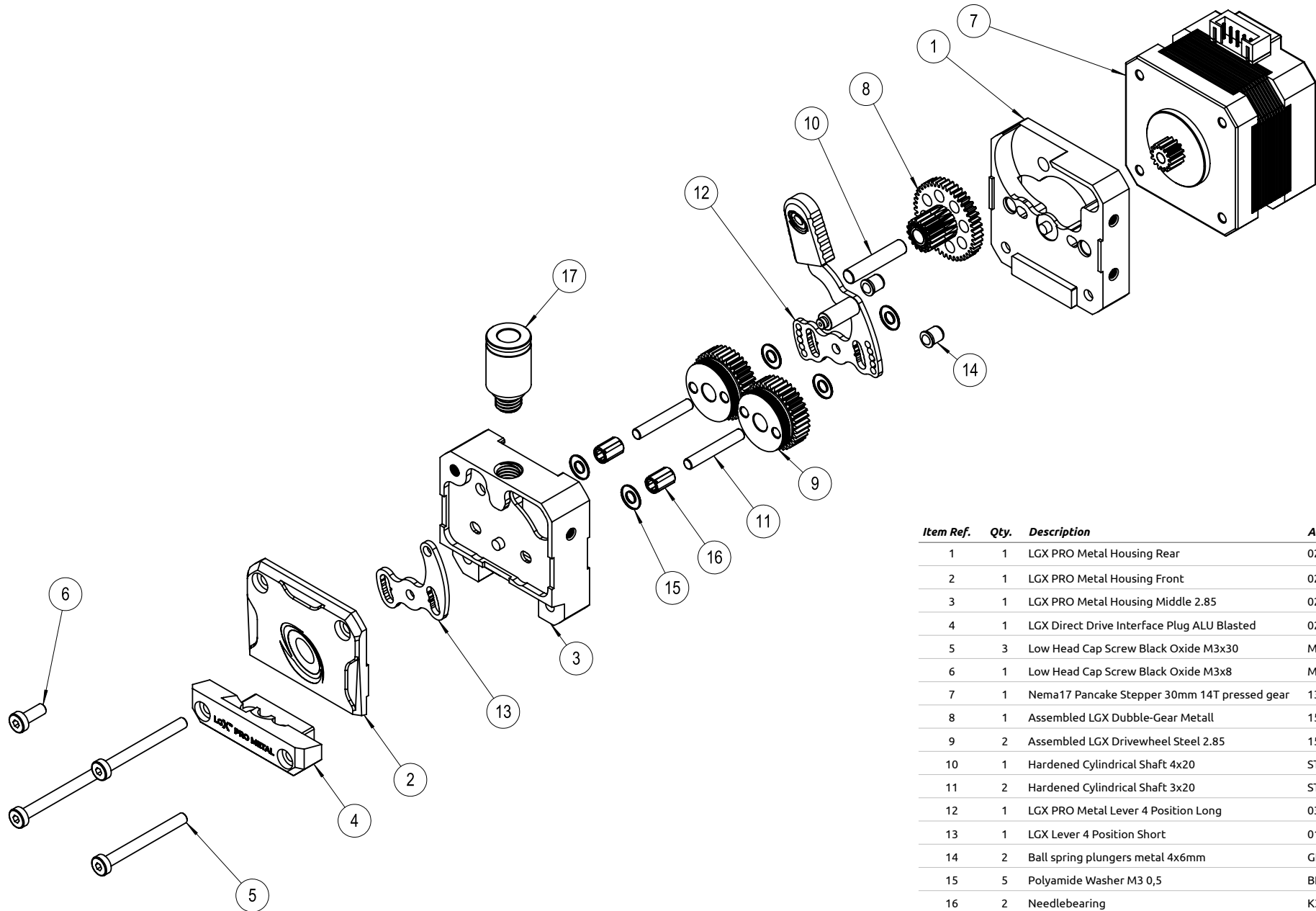
Nitrocarburized SS1914, Surface coating
See drawing above for more details about mounting points location and thread depth
Higher currents may be used on lower working temperatures
Net weight

Specifications

Tension	Adjustable with 5 fixed positions	1-2 Rigid Materials. 2-3 Semi-flexible. 3-5 Flexible/Soft
Max Peak Current 1.5A	Recommended Current 700-1000mA	
Stepper Motor	30mm Nema 17 1.8 degree	
Motor Insulation Class	Class-H	
Motor Connector	S6B-PH-K-S	To use with cable connector of type PHR-6 or equivalent
Filament Diameter	2.85mm	Visual inspection every 100 print hours. Clean and apply new lubrication on the gears
Lubrications	Berutox FB22	
CE Certified	Yes	
RoHS	Yes	
Reach	Yes	

#extruder

EXT01LGX41176
SKU



Item Ref.	Qty.	Description	Article Number
1	1	LGX PRO Metal Housing Rear	02PRT41HSP00015
2	1	LGX PRO Metal Housing Front	02PRT41HSP00017
3	1	LGX PRO Metal Housing Middle 2.85	02PRT41HSP00049
4	1	LGX Direct Drive Interface Plug ALU Blasted	02PRT40ADP00115
5	3	Low Head Cap Screw Black Oxide M3x30	M3X30L
6	1	Low Head Cap Screw Black Oxide M3x8	M3X8L
7	1	Nema17 Pancake Stepper 30mm 14T pressed gear	13014
8	1	Assembled LGX Dubble-Gear Metall	15146
9	2	Assembled LGX Drivewheel Steel 2.85	15150
10	1	Hardened Cylindrical Shaft 4x20	STIFT4X20M6
11	2	Hardened Cylindrical Shaft 3x20	STIFT3X20M6
12	1	LGX PRO Metal Lever 4 Position Long	03MCH14PLT00011
13	1	LGX Lever 4 Position Short	01MCH14PLT00010
14	2	Ball spring plungers metal 4x6mm	GN614NI4
15	5	Polyamide Washer M3 0,5	BRICKAM3PLAST
16	2	Needlebearing	K3X5X7
17	1	Push-in fitting M7 6mm	01PNM30CTS00080

EXTRUDER EXPLODED VIEW #02/02