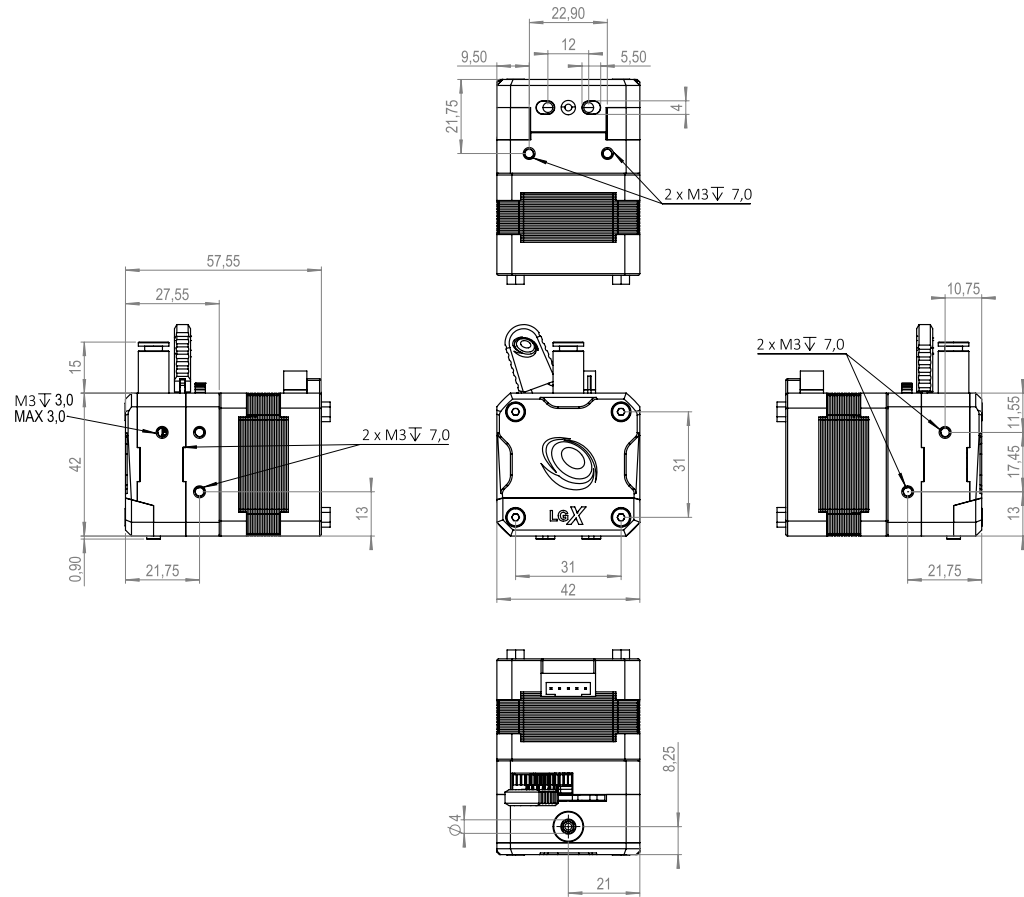


#extruder

EXT01LGX41036
SKU



NAME LGX PRO Metal 1.75 eXtruder

TYPE Extruder

SKU EXT01LGX41036

Specifications

E-Steps	410 @ 1/16 micro stepping. For Klipper Rotation Distance 7.785
Drive Wheels	Hardened Steel
Top Fitting Tube OD	4.10mm
Materials Compatibility	Abrasive, Rigid, Semi-flexible, Flexible and Soft
Mounting	Bottom anterior 2 points. Left 2 points. Right 2 points. Front 4 points. Back 4 points
Max Tightening Torque	0.3Nm (Limit of the threads on Stepper Motor)
Housing	Aluminum
Max Working Temperature	90°C @ 650mA
Weight	300g
Push Force	7-10kg

Comments

Nitrocarburized SS1914, Surface coating

See drawing above for more details about mounting points location and thread depth

Higher currents may be used on lower working temperatures

Net weight

Specifications

Tension	Adjustable with 5 fixed positions
Max Peak Current 1.5A	Recommended Current 700-1000mA
Stepper Motor	30mm Nema 17 1.8 degree
Motor Insulation Class	Class-H
Motor Connector	S6B-PH-K-S
Filament Diameter	1.75mm
Lubrications	Berutox FB22
CE Certified	Yes
RoHS	Yes
Reach	Yes

Comments

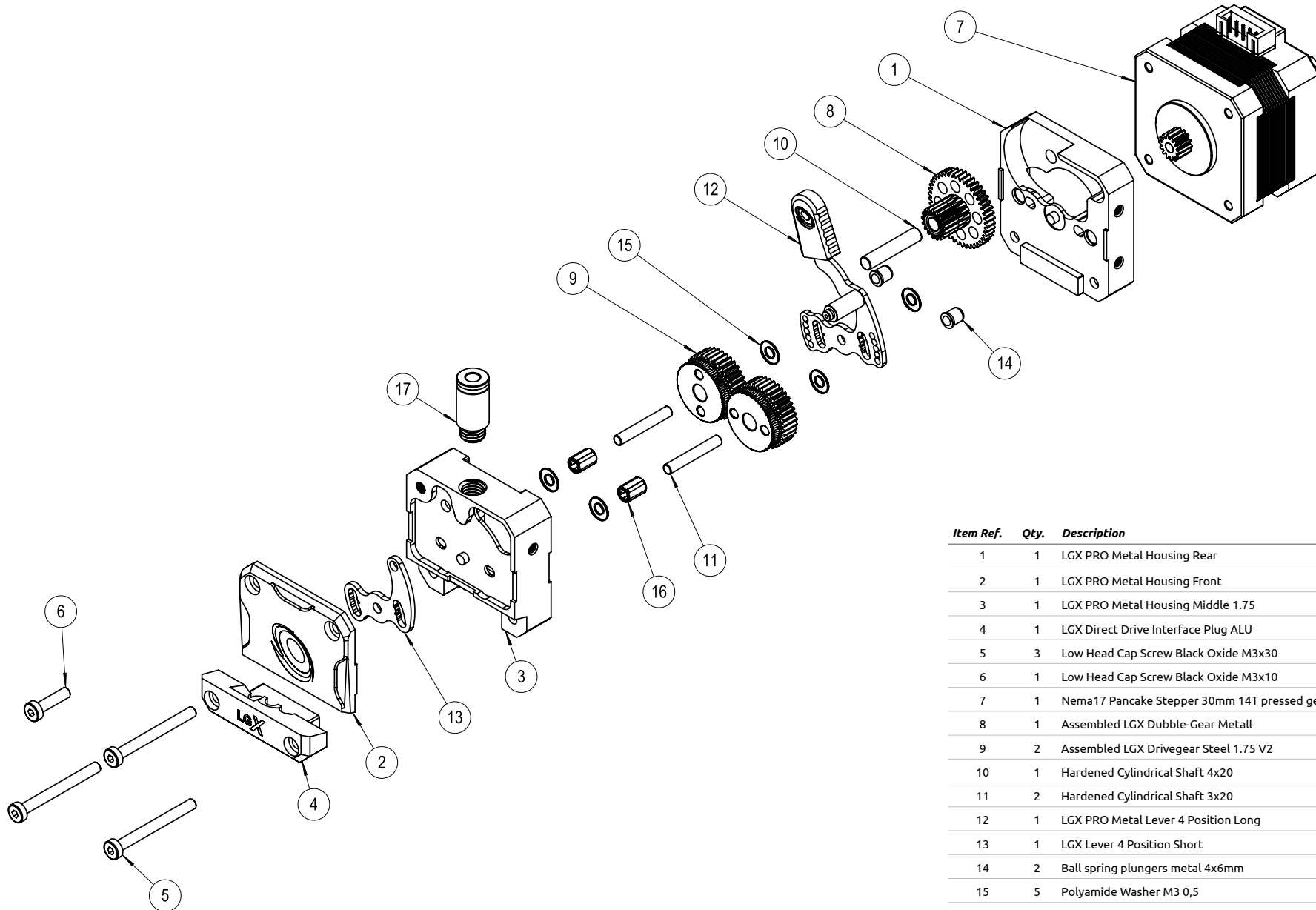
1-2 Rigid Materials. 2-3 Semi-flexible. 3-5 Flexible/Soft

To use with cable connector of type PHR-6 or equivalent

Visual inspection every 100 print hours. Clean and apply new lubrication on the gears

#extruder

EXT01LGX41036
SKU



Item Ref.	Qty.	Description	Article Number
1	1	LGX PRO Metal Housing Rear	02PRT41HSP00015
2	1	LGX PRO Metal Housing Front	02PRT41HSP00017
3	1	LGX PRO Metal Housing Middle 1.75	02PRT41HSP00016
4	1	LGX Direct Drive Interface Plug ALU	15116
5	3	Low Head Cap Screw Black Oxide M3x30	M3X30L
6	1	Low Head Cap Screw Black Oxide M3x10	M3X10L
7	1	Nema17 Pancake Stepper 30mm 14T pressed gear	13014
8	1	Assembled LGX Dubble-Gear Metall	15146
9	2	Assembled LGX Drivegear Steel 1.75 V2	15162
10	1	Hardened Cylindrical Shaft 4x20	STIFT4X20M6
11	2	Hardened Cylindrical Shaft 3x20	STIFT3X20M6
12	1	LGX PRO Metal Lever 4 Position Long	03MCH14PLT00011
13	1	LGX Lever 4 Position Short	01MCH14PLT00010
14	2	Ball spring plungers metal 4x6mm	GN614NI4
15	5	Polyamide Washer M3 0,5	BRICKAM3PLAST
16	2	Needlebearing	K3X5X7
17	1	Push-in fitting M7 4mm	01PNM30CTS00079

EXTRUDER EXPLODED VIEW #02/02